

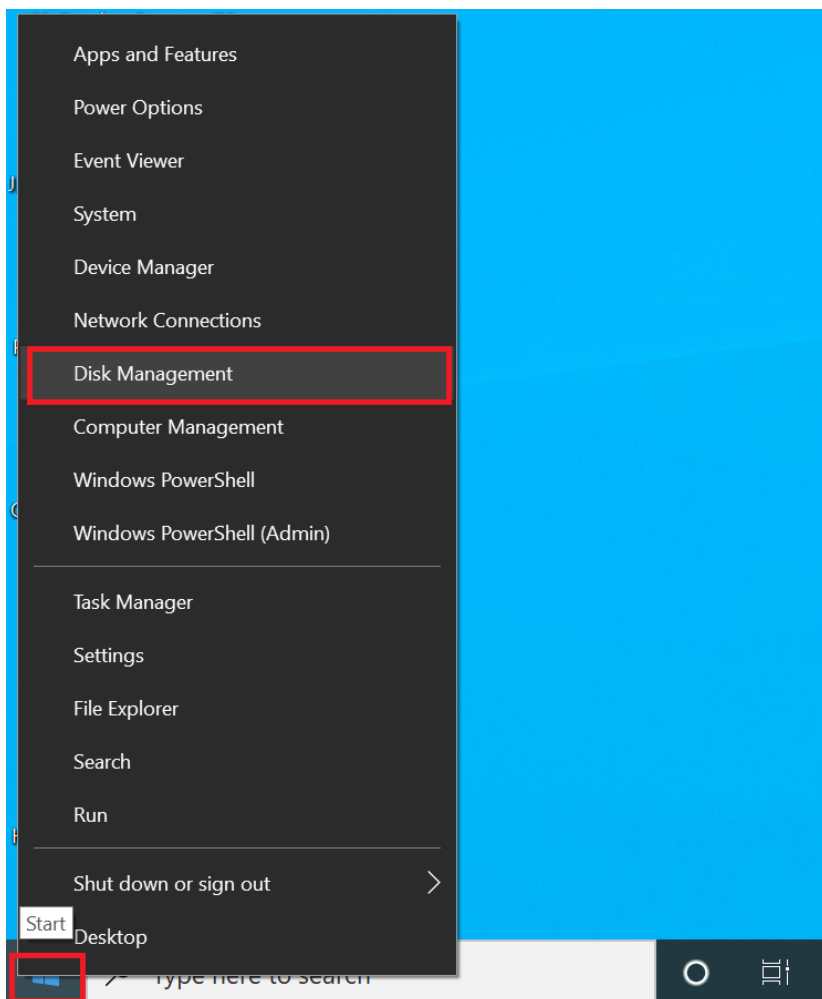
# EXCERIA PLUS Portable SSD exFAT MBR Format

## procedure using Windows PC

Please follow as below procedure to format EXCERIA PLUS Portable SSD to exFAT MBR with Windows 10.

Please be sure to back up important and necessary data before formatting because that formatting may result in loss of all data.

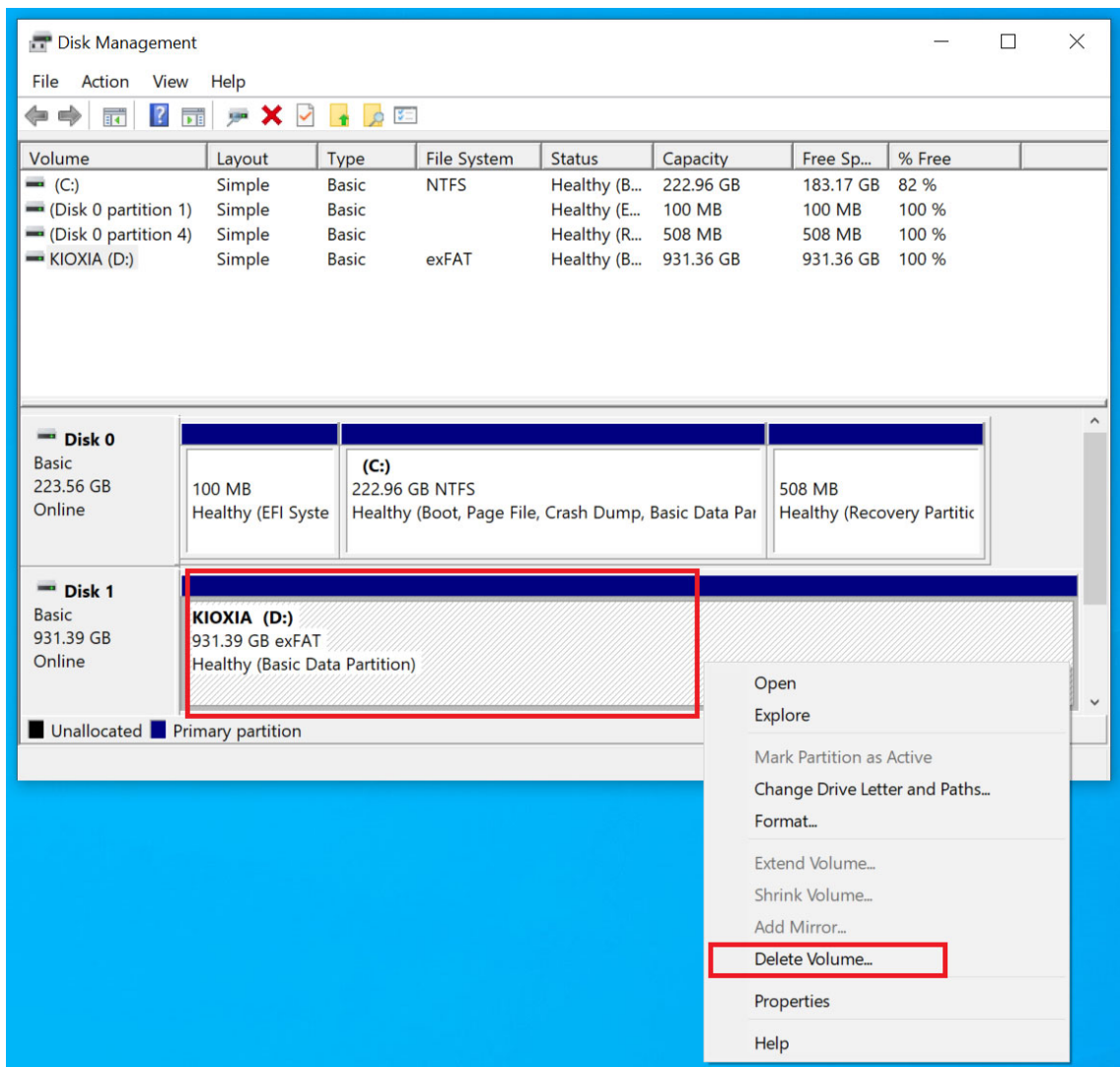
1. Plug EXCERIA PLUS Portable SSD directly to a USB port of Windows PC.  
Right-click start button at the bottom left of the screen, after that left-click 『Disk Management』 in the menu to start Disk Management.



2. You can find KIOXIA(D:) in the lower list. When you find the KIOXIA(D:), right-click on it and left-click 『Delete Volume...』.

This example is showing the case that one system disk and one EXCERIA PLUS portable SSD are plugged in Windows PC. Please note that the drive character displayed may differ from (D) when two or more disks are plugged in Windows PC.

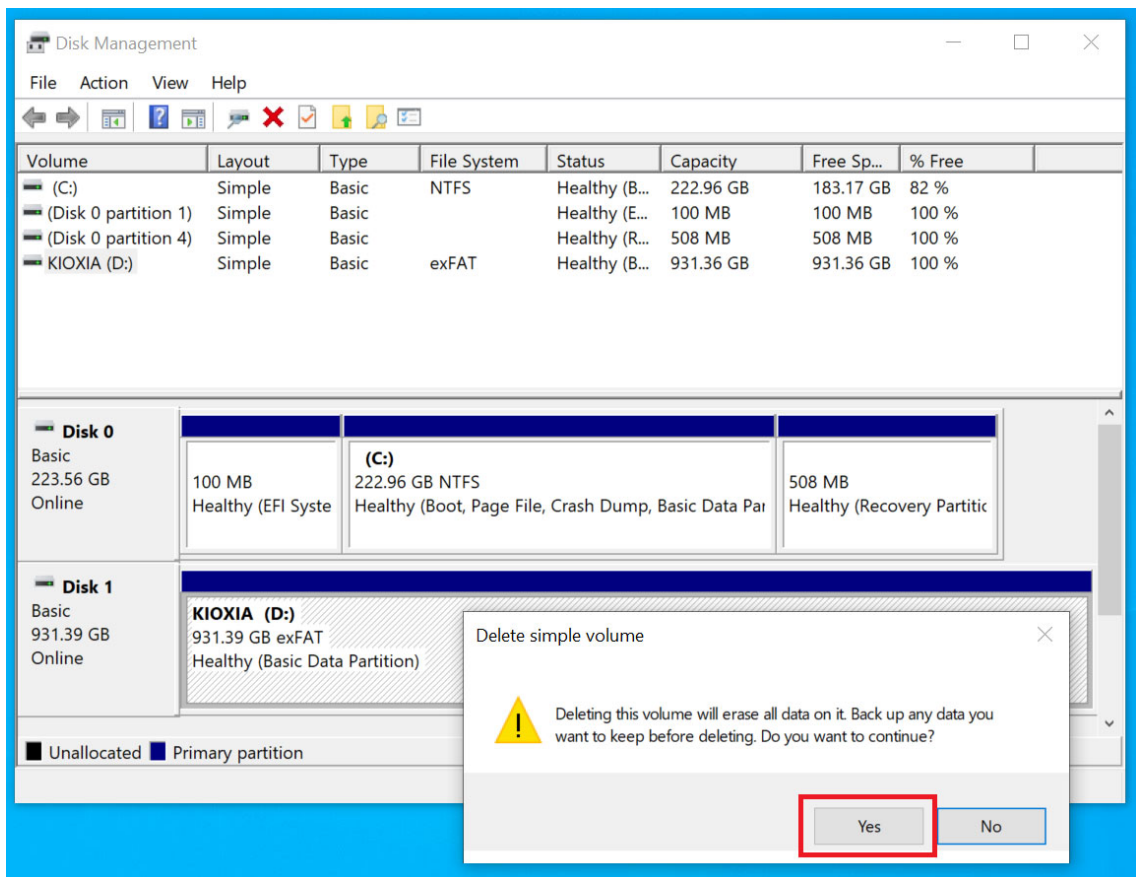
In case you choose wrong disk by mistake, keep in mind that it will result in loss of all the data in the wrong disk.



3. The start delete simple volume window is displayed, left-click on 『Yes』.  
Please be sure to back up important and necessary data before formatting because that formatting may result in loss of all data.

If you have not backed up important and necessary data yet, left-click on 『No』, and back up important and necessary data before operation.

In case you choose wrong disk by mistake, keep in mind that it will result in loss of all the data in the wrong disk.



#### 4. EXCERIA PLUS Portable SSD is changed as Unallocated.

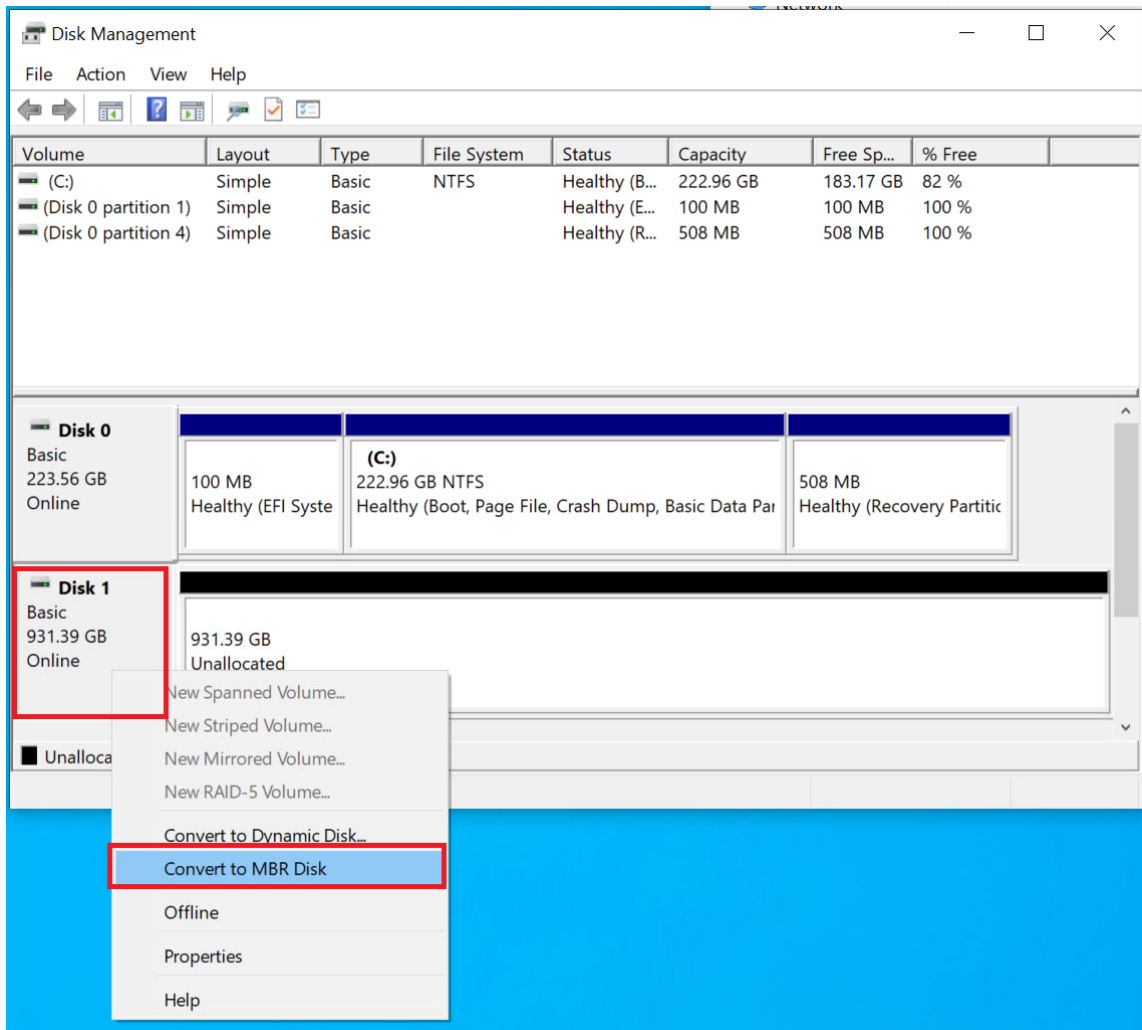
The screenshot shows the Windows Disk Management console. At the top, a table lists the volumes on Disk 0. Below this, the details for Disk 0 and Disk 1 are shown. Disk 0 is a 223.56 GB Basic disk, Online, with three partitions: a 100 MB Healthy (EFI System) partition, a 222.96 GB NTFS (C:) partition, and a 508 MB Healthy (Recovery) partition. Disk 1 is a 931.39 GB Basic disk, Online, and is entirely unallocated. A legend at the bottom indicates that black represents unallocated space and blue represents a primary partition.

Volume	Layout	Type	File System	Status	Capacity	Free Sp...	% Free
(C:)	Simple	Basic	NTFS	Healthy (B...	222.96 GB	183.17 GB	82 %
(Disk 0 partition 1)	Simple	Basic		Healthy (E...	100 MB	100 MB	100 %
(Disk 0 partition 4)	Simple	Basic		Healthy (R...	508 MB	508 MB	100 %

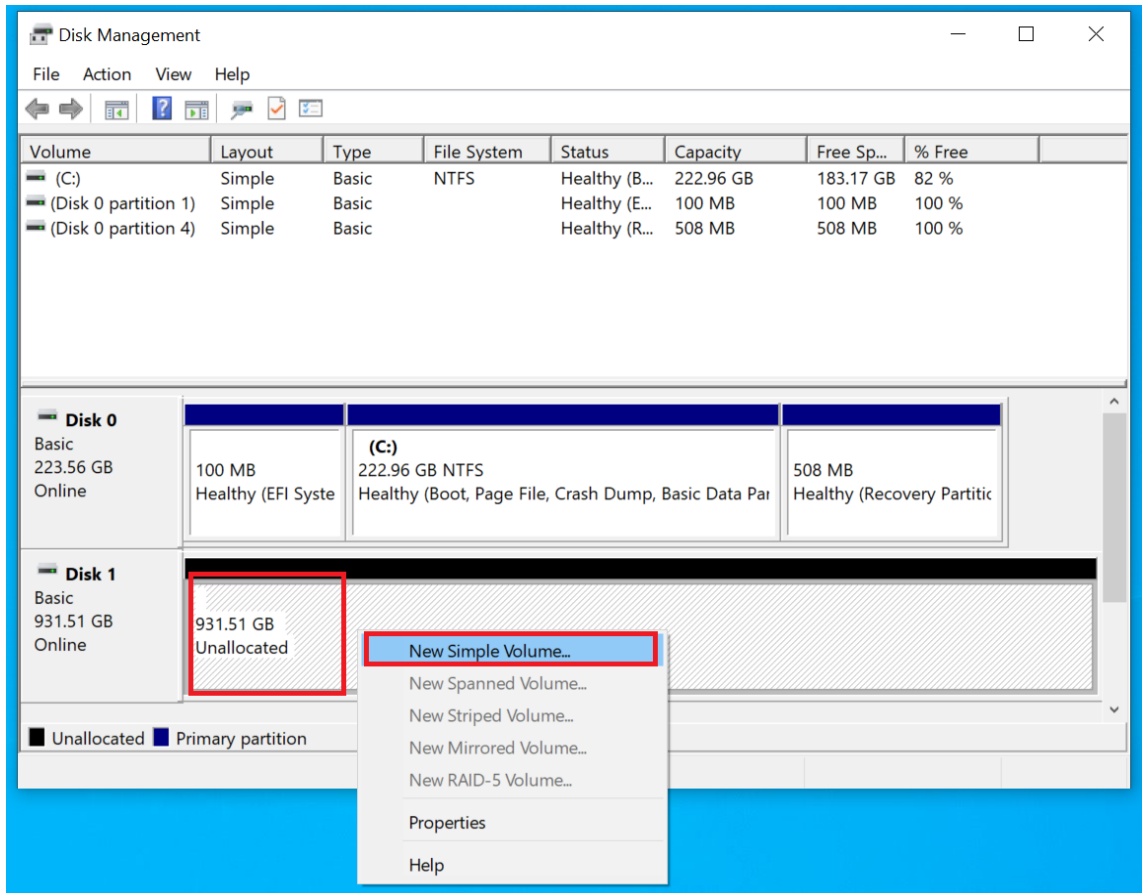
  

Disk	Capacity	Type	Status	Partitions
Disk 0	223.56 GB	Basic	Online	100 MB Healthy (EFI System), 222.96 GB NTFS (C:), 508 MB Healthy (Recovery)
Disk 1	931.39 GB	Basic	Online	931.39 GB Unallocated

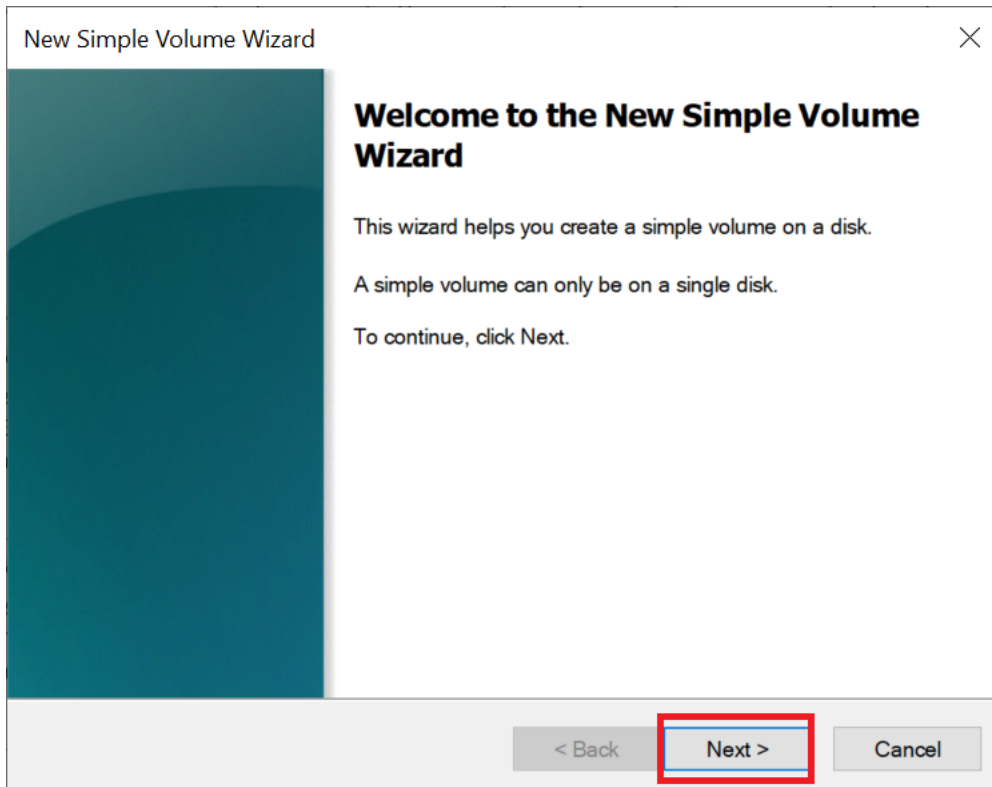
5. Right-click on Disk1 part, after that left-click on 『Convert to MBR Disk』.



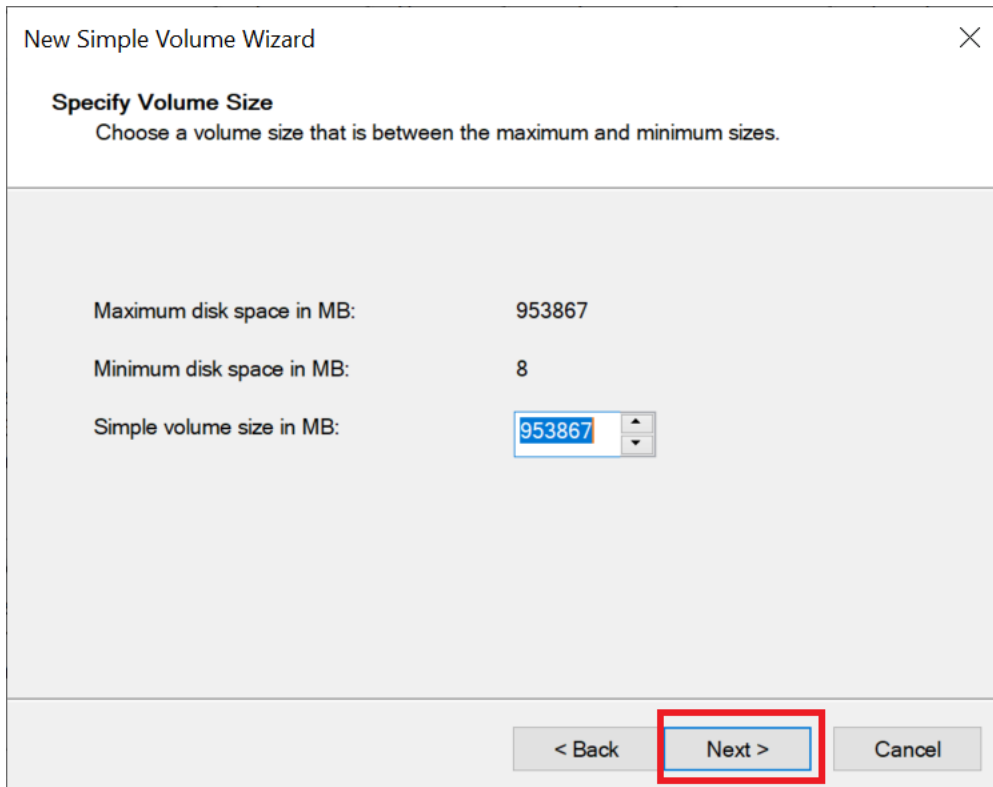
6. Right-click on Unallocated part, after that left-click on 『New Simple Volume...』.



7. Display New Simple Volume Wizard, click on 『Next(N) >』.



8. Display Specify Volume Size window, click on 『Next(N) >』.



New Simple Volume Wizard

**Specify Volume Size**  
Choose a volume size that is between the maximum and minimum sizes.

Maximum disk space in MB:	953867
Minimum disk space in MB:	8
Simple volume size in MB:	<input type="text" value="953867"/>

< Back   **Next >**   Cancel



9. Display Assign Drive Letter or Path window, click on 『Next(N) >』.

The screenshot shows a window titled "New Simple Volume Wizard" with a close button (X) in the top right corner. The main heading is "Assign Drive Letter or Path" with the instruction "For easier access, you can assign a drive letter or drive path to your partition." Below this, there are three radio button options: "Assign the following drive letter:" (selected), "Mount in the following empty NTFS folder:" (with an empty text box and a "Browse..." button), and "Do not assign a drive letter or drive path". The "Assign the following drive letter:" option has a dropdown menu showing "D". At the bottom, there are three buttons: "< Back", "Next >" (highlighted with a red box), and "Cancel".

New Simple Volume Wizard

**Assign Drive Letter or Path**  
For easier access, you can assign a drive letter or drive path to your partition.

Assign the following drive letter: D

Mount in the following empty NTFS folder:  
 Browse...

Do not assign a drive letter or drive path

< Back Next > Cancel

10. Display Format Partition window. Select 『Format this volume with the following settings:』. Select 『exFAT』 in the File system field. Input 『KIOXIA』 in the Volume label field. Confirm to check the 『Perform a quick format』, click on 『Next(N) >』.

New Simple Volume Wizard

**Format Partition**  
To store data on this partition, you must format it first.

Choose whether you want to format this volume, and if so, what settings you want to use.

Do not format this volume

Format this volume with the following settings:

File system: exFAT

Allocation unit size: Default

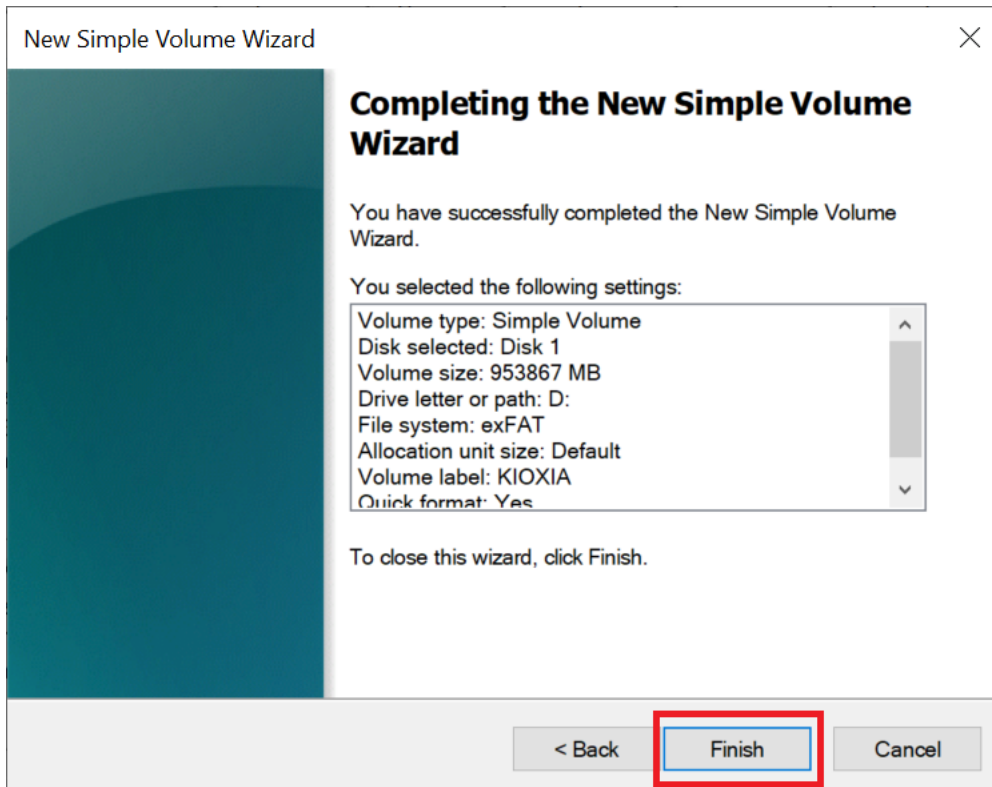
Volume label: KIOXIA

Perform a quick format

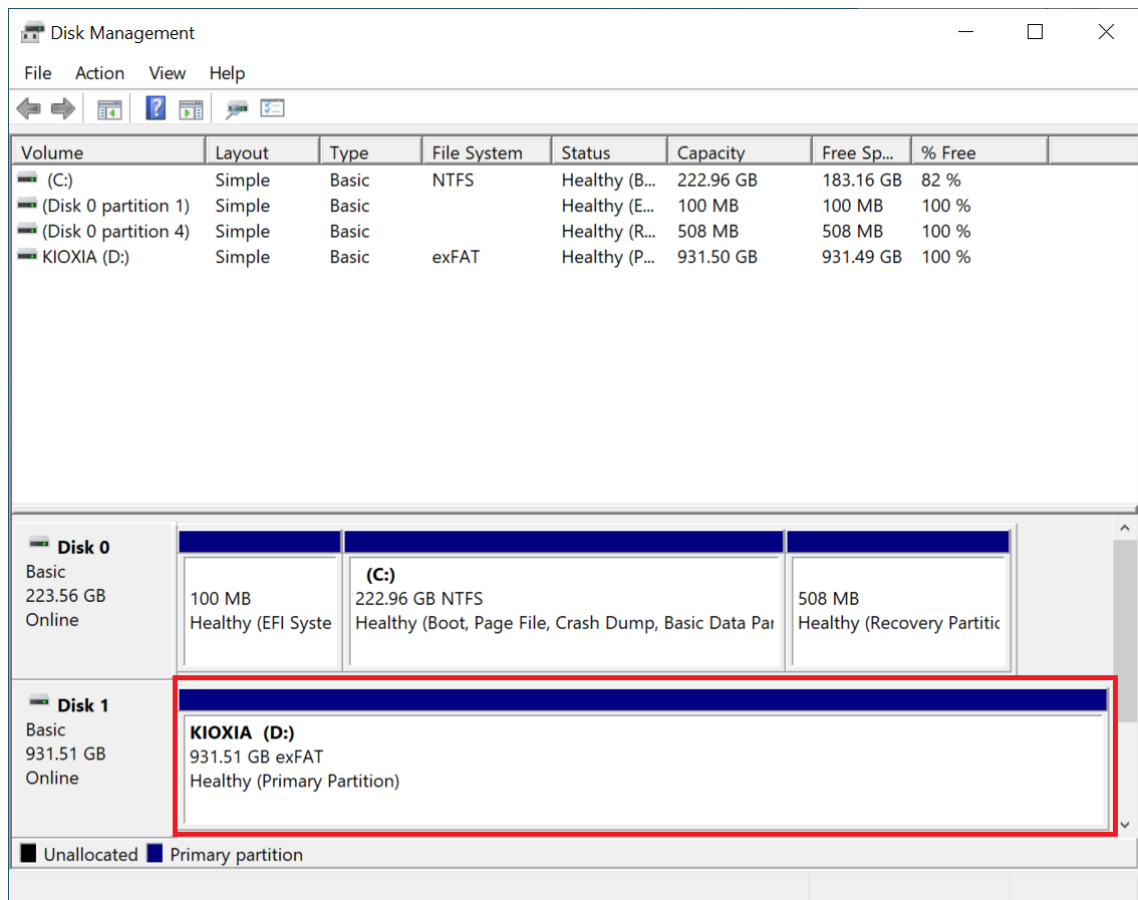
Enable file and folder compression

< Back   Next >   Cancel

11. Display Completing the New Simple Volume Wizard, click on 『Finish』.



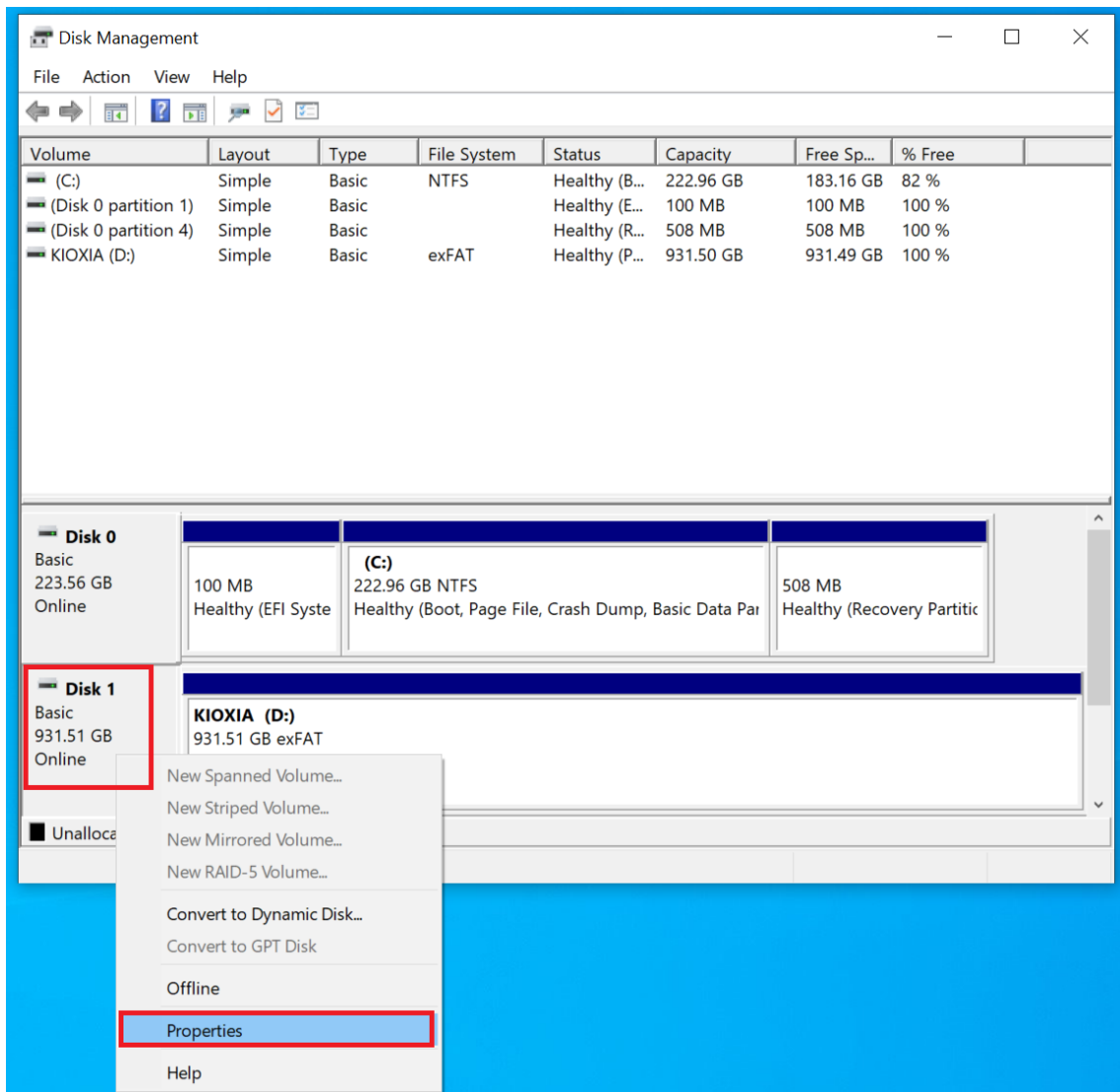
12. The screen returns to the 『Disk Management』 window. The part that was Unallocated disk is mounted on the D drive with the name "KIOXIA".



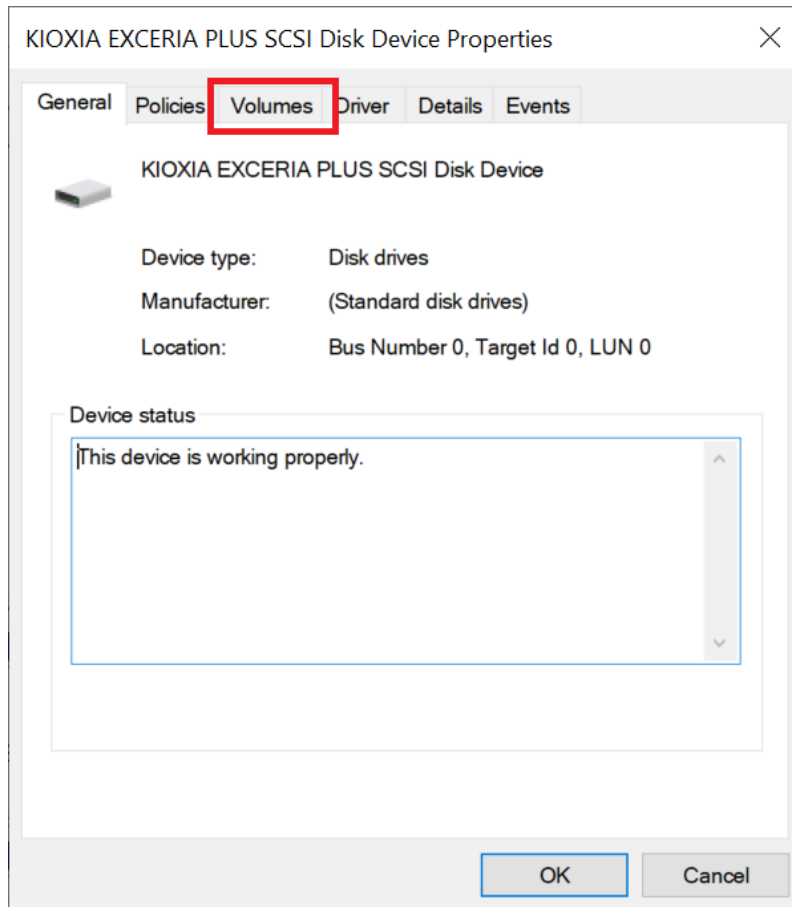
13. Formatting is complete.

14. You can confirm EXCERIA PLUS Portable SSD formatting status as below procedure.

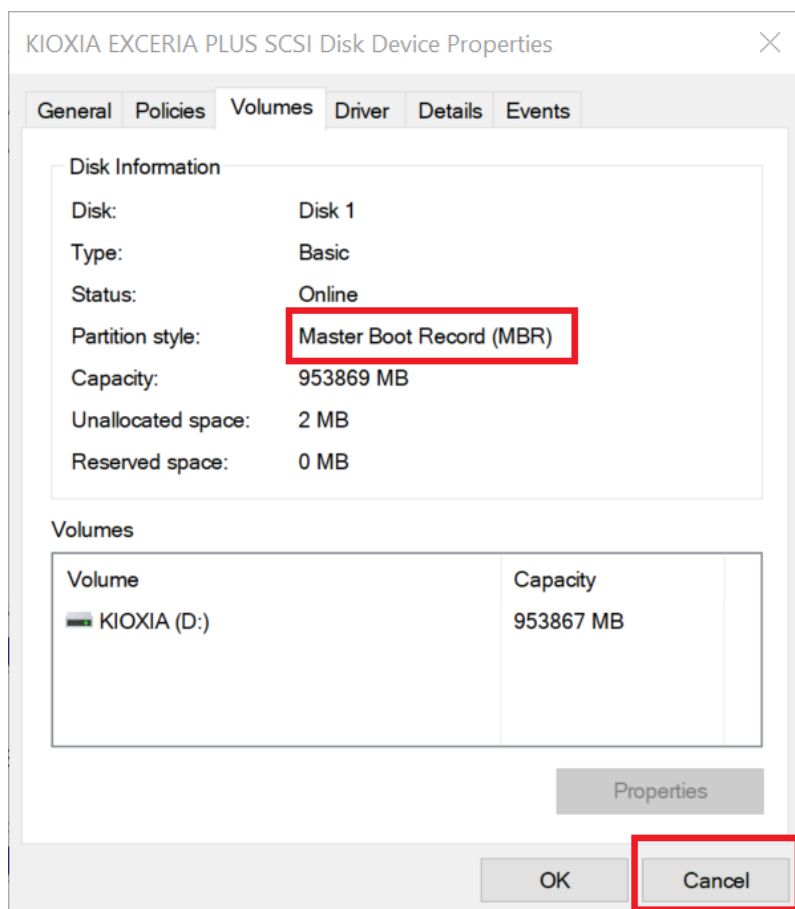
15. Right-click on Disk1 part, after that left-click on 『Properties』.



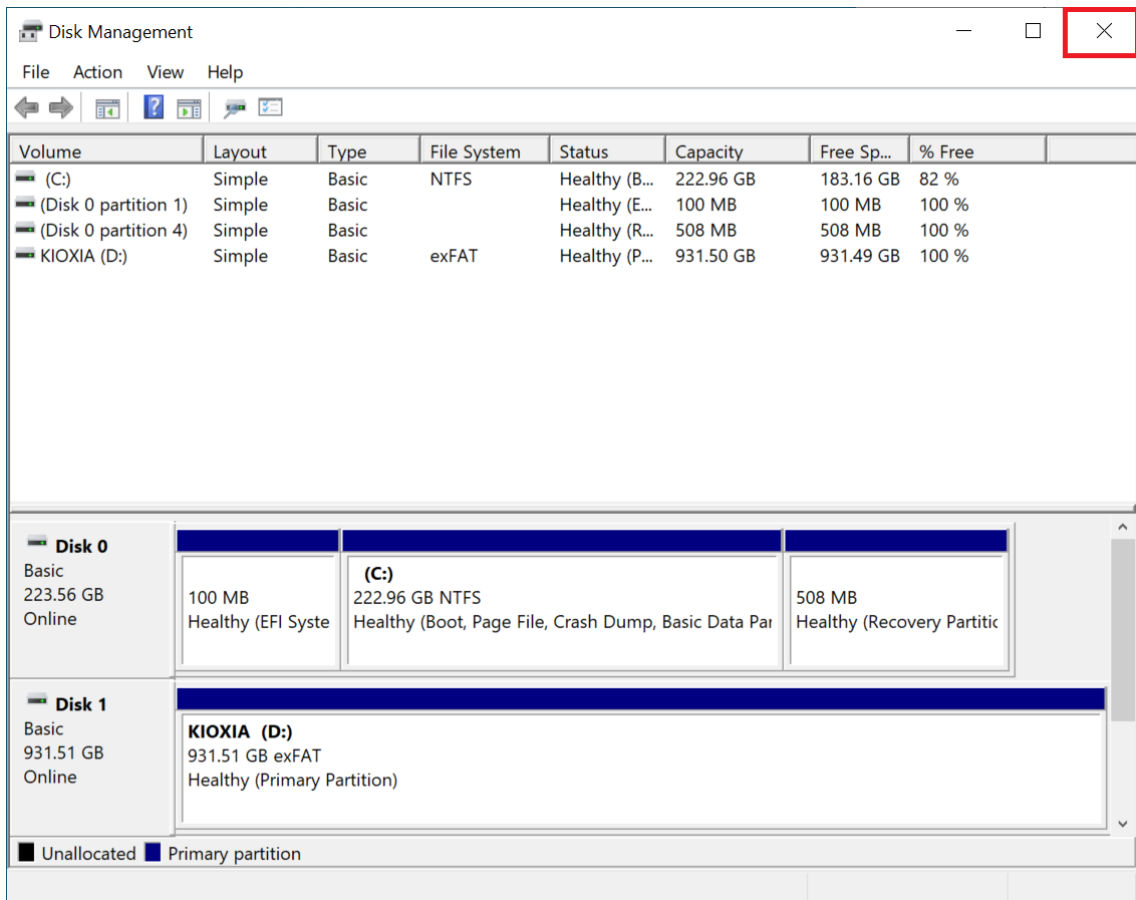
16. Display KIOXIA EXCERIA PLUS SCSI Disk Device Properties, select 『Volume』 tab.



17. You can find 『Master Boot Record(MBR)』 in the Partition style field. Click on 『Cancel』.



18. Left-click the 『x』 mark on the upper right to end disk management.





19. If you display This PC in Explorer, you will see EXCERIA PLUS Portable SSD you formatted earlier is KIOXIA(D:).

